

Nextiva S2800e V-WM Wall Mount

Installation & Operation Manual

VERINT.

VIDEO INTELLIGENCE SOLUTIONS™



2009 Verint Systems Inc. All Rights Reserved Worldwide.

Unauthorized use, duplication, or modification of this document in whole or in part without the written consent of Verint Systems Inc. is strictly prohibited. By providing this document, Verint Systems Inc. is not making any representations regarding the correctness or completeness of its contents and reserves the right to alter this document at any time without notice. Features listed in this document are subject to change.

Verint Systems Inc. does not warrant, guarantee or make any representation regarding the use or the results of the use of the information, links, tools, and materials in terms of the accuracy, reliability, quality, validity, stability, completeness, currentness, or otherwise of its content or products. The entire risk as to the use, results and performance of information, links, tools and materials provided or referenced herein is assumed by the user. Verint Systems Inc. shall not be liable for damages resulting from the use, misuse or unlawful use of the information, links, tools, and materials contained or referenced herein.

The Verint Systems Inc. products are protected by one or more of the following U.S., European or International Patents: USPN 5,659,768; USPN 5,689,442; USPN 5,790,798; USPN 6,278,978; USPN 6,370,574; USPN 6,404,857; USPN 6,510,220; USPN 6,724,887; USPN 6,751,297; USPN 6,757,361; USPN 6,782,093; USPN 6,952,732; USPN 6,959,078; USPN 6,959,405; USPN 7,047,296; USPN 7,149,788; USPN 7,155,399; USPN 7,203,285; USPN 7,216,162; USPN 7,219,138; USPN 7,254,546; USPN 7,281,173; USPN 7,284,049; USPN 7,325,190; USPN 7,424,715; USPN 7,466,816; USPN 7,478,051; USPN RE40,634; and other provisional rights from one or more of the following Published US Patent Applications: US 11/394,408; US 11/771,499; US 11/396,514; US 11/772,440; US 11/565,943; US 11/565,946; US 11/565,948; US 11/540,739; US 11/540,086; US 11/541,313; US 11/541,252; US 11/540,282; US 11/529,947; US 11/540,785; US 11/540,736; US 11/540,904; US 11/540,353; US 11/608,340; US 11/608,350; US 11/608,358; US 11/567,808; US 11/692,983; US 11/693,933; US 11/693,923; US 11/693,828; US 11/567,852; US 11/608,440; US 12/015,621; US 11/540,322; US 11/924,201; US 11/616,490; US 11/621,134; US 11/752,458; US 11/712,933; US 11/824,980; US 11/729,185; US 11/804,748; US 11/831,260; US 11/395,992; US 11/359,319; US 11/359,195; US 11/359,357; US 10/832,509; US 11/742,733; US 11/831,257; US 11/831,250; US 11/691,530; US 11/479,267; US 11/529,942; US 11/768,349; US 11/540,281; US 10/633,357; US 11/693,899; US 11/479,056; US 11/529,132; US 11/540,320; US 11/037,604; US 11/529,842; US 11/540,171; US 11/478,714; US 11/529,946; US 11/868,656; US 11/776,659; US 11/090,638; US 11/410,004; US 10/771,315; US 10/771,409; US 11/540,900; US 11/528,267; US 12/118,781; and other U.S. and International Patents and Patents Pending.

VERINT, the VERINT logo, ACTIONABLE INTELLIGENCE, POWERING ACTIONABLE INTELLIGENCE, WITNESS ACTIONABLE SOLUTIONS, STAR-GATE, RELIANT, VANTAGE, X-TRACT, NEXTIVA, ULTRA, AUDIOLOG, WITNESS, the WITNESS logo, IMPACT 360, the IMPACT 360 logo, IMPROVE EVERYTHING, EQUALITY, CONTACTSTORE, and CLICK2STAFF are trademarks or registered trademarks of Verint Systems Inc. or its subsidiaries. Other trademarks mentioned are the property of their respective owners.



Table of Contents

Introduction	3
Installation Preparation	3
Fastener Guidelines	3
Indoor Installation Procedure	4
Outdoor Installation Procedure	6
Technical Information	8



Introduction

The information in this instruction manual covers the installation of the Nextiva® S2800e V-WM Wall Mount. This mount should only be installed by a qualified technician using approved materials and wiring practices in accordance with the National Electrical Code ANSI/NFPA 70, state, and local electrical codes. Read these instructions thoroughly before beginning an installation.

The V-WM Wall Mount offers a mounting alternative for pendant configurations. The wall mount can be used for indoor applications with a small inconspicuous mounting plate for an aesthetically pleasing look; for rugged indoor or outdoor applications, a large mounting plate and weatherproof gasket is provided to form a moisture seal. In addition, the outdoor mounting plate provides a more secure installation that is less susceptible to vandalism; tamperproof mounting hardware (not included) can be used for added security. The accessory kit contains all necessary hardware for installation except mounting hardware appropriate for the mounting surface.

Installation

Installation Preparation

The V-WM Wall Mount has a 1-1/2 inch (38 mm) opening in accordance with American National Standard Tapered Pipe Thread (NPT) pipe. The camera dome housing mounts to the SVFT-WM using the 1-1/2 inch NPT pipe thread in accordance with the installation manual for the camera dome.

Note: The standard 1-1/2 inch NPT threads referred to in this manual are in accordance with ANSI B2.1-196.

The wall mount is designed to attach to a wall or other vertical surface. Mounting plates are supplied for indoor or outdoor (or harsh indoor) environments, as well as all necessary hardware for installation except mounting hardware appropriate for the mounting surface.

Cabling for power, control, and video must be run to the installation site before the mount is installed, since it is run through the mount to the interior of the dome assembly. The recommended method for cable routing is through the cable access hole in the mounting plate that mounts to the vertical surface.

Fastener Guidelines

This mount is designed to be attached with #10 (metric M5) bolts or lag screws for both the outdoor bracket and the indoor bracket. Bolts should extend through the structure with nuts and washers used on the opposite side. Studs should be either anchored in concrete or welded to steel. If the mount is to be attached to a blind structure, make certain that the fasteners used have a minimum pull-out strength of 1500 pounds (680 kg) each and are locked with washers. Never use lag screws in the end grain of wood.

1. If the surface is concrete, use #10 lag bolts, flat and lock washers (indoor or outdoor bracket) with concrete anchors.
2. If the surface is wood, use #10 bolts, nuts, flat and lock washers (indoor or outdoor bracket).
3. If the mount is to be attached to wooden beams, use #10 lag bolts not shorter than 2.0 inches (51 mm) with flat and lock washers (indoor or outdoor bracket).
4. If the mount is to be attached to steel beams or steel plate, use #10 bolts, nuts, flat and lock washers (indoor or outdoor bracket).

Note: Use stainless steel mounting hardware for units mounted outdoors.

Indoor Installation Procedure

When installing the V-WM in an indoor location, use the following procedure. Refer to Figure 1.

1. Select a mounting location that meets the requirements stated above for support and access. The mount weighs 1.4 pounds (0.6 kg). Refer to the appropriate Product Specifications for the other components in the system for their weights.

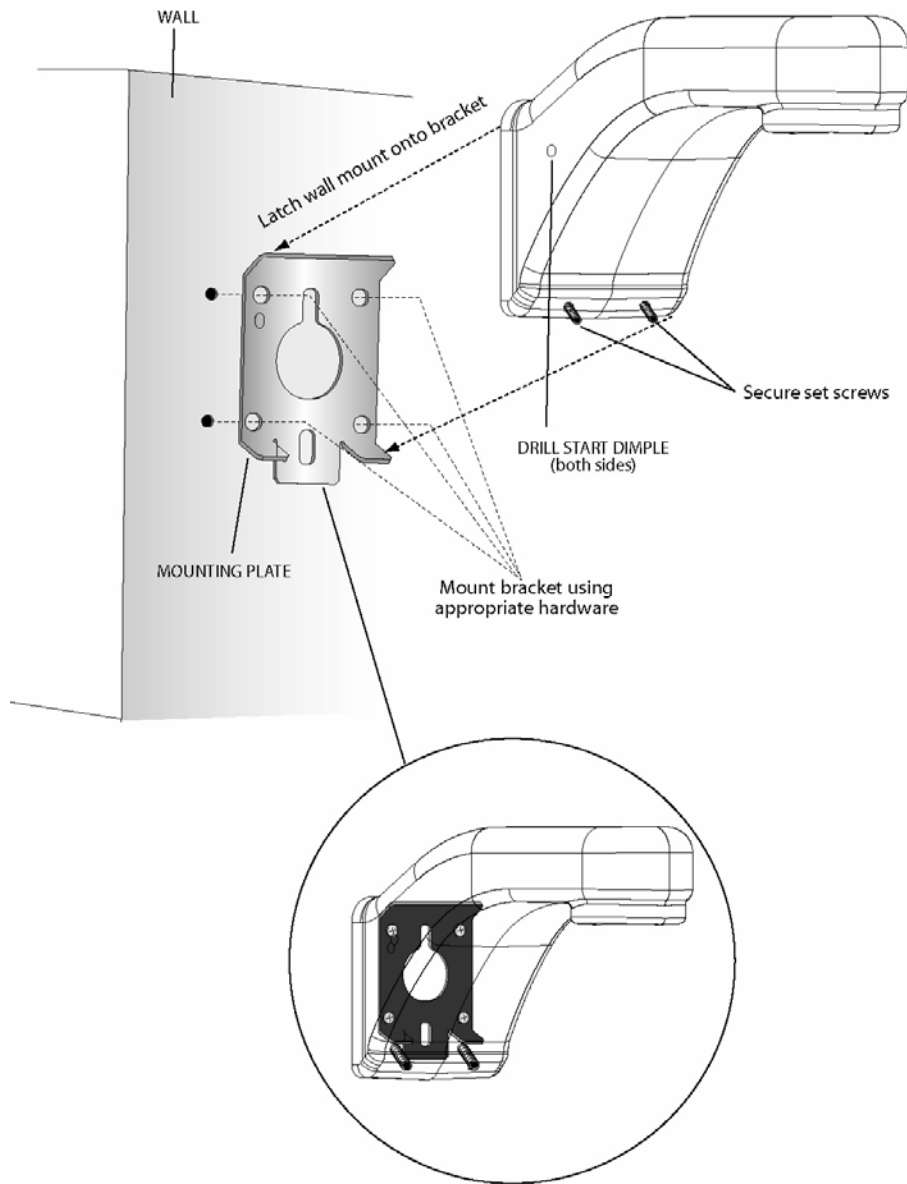
⚠ Caution: Mount this unit only to structural materials with sufficient strength to carry the overall weight of the wall mount and unit.

2. Mark the locations for drilling the mounting bolt holes and the cable access hole by using the indoor mounting plate as a template. The two ears face down. See Figure 3 for dimensions.
3. Drill passage holes for the bolts or drill pilot holes for the lag screws and cut out a hole large enough to comfortably pass the cables.
4. Pass the cables through the vertical mounting surface and the access hole in the mounting plate.

Note: Verify that the selected mounting location is free of obstacles such as wiring or pipes.

5. Mount the plate to the vertical surface with hardware appropriate for the mounting surface. Use #10 hardware in four (4) places minimum.
6. Feed the cables through the mount so that at least two feet of cable projects from the end of the threaded pipe. Be careful not to scrape insulation off the cables as they are passed through the mount. There are optional drill start dimples on the sides of the mount if cable cannot be routed through the vertical surface. Use these dimples to drill an alternate conduit hole in either side of the mount.

Latch the wall mount onto the plate so the top tab of the bracket hooks into the inside top of the wall mount and the two (2) bottom tabs are in front of the set screw holes. Tighten the two (2) set screws with the key provided.



⚠ Caution: Do not use this configuration in locations where vandalism may be encountered, where there are high wind loads or where excessive moisture could enter the mount and possibly damage the camera.

Figure 1
Indoor Bracket Installation

Outdoor Installation Procedure

Use the following procedure and mounting orientation indicated in Figure 2 only when installing the V-WM in an outdoor location or a harsh indoor environment.

1. Select a mounting location that meets the requirements stated above for support and access. The mount weighs 1.4 pounds (0.6 kg). Refer to the appropriate Product Specifications for the other components in the system for their weights.

⚠ Caution: *Mount this unit only to structural materials with sufficient strength to carry the weight of the unit.*

2. Mark the locations for drilling the mounting bolt holes and the cable access hole by using the outdoor mounting plate as a template. See Figure 3 for dimensions.
3. Drill passage holes for the bolts or drill pilot holes for the lag screws and cut out a hole large enough to comfortably pass the cables.
4. Pass the cables through the vertical mounting surface.

Note: *Verify that the selected mounting location is free of obstacles such as wiring or pipes.*

5. Put a generous layer of silicone sealant (RTV) around the flange surface of the mount to prevent water from entering the mount. Place the silicone so that a continuous perimeter seal will be made when the mount is bolted to the outdoor mounting plate.
6. Attach the outdoor mounting plate to the mounting flange of the wall mount with the four (4) flat head screws provided. Press the external sealing gasket onto the mounting plate.
7. Feed the cables through the mount so that at least two feet of cable projects from the end of the threaded pipe. Be careful not to scrape insulation off the cables as they are passed through the mount. There are optional drill start dimples on the sides of the mount if cable cannot be routed through the vertical surface. Drill hole for an appropriate conduit.
8. Line up the mounting holes and attach the mount to the supporting structure with hardware appropriate for the mounting surface. Make sure the gasket is sandwiched between the plate and the mounting surface.
9. As an added precaution, carefully seal the perimeter edge of the mount after installation with a generous layer of silicone sealant (RTV).

Note: *Pay particular attention that all gaps are sealed if the V-WM is mounted to an irregular surface, such as a brick facade*

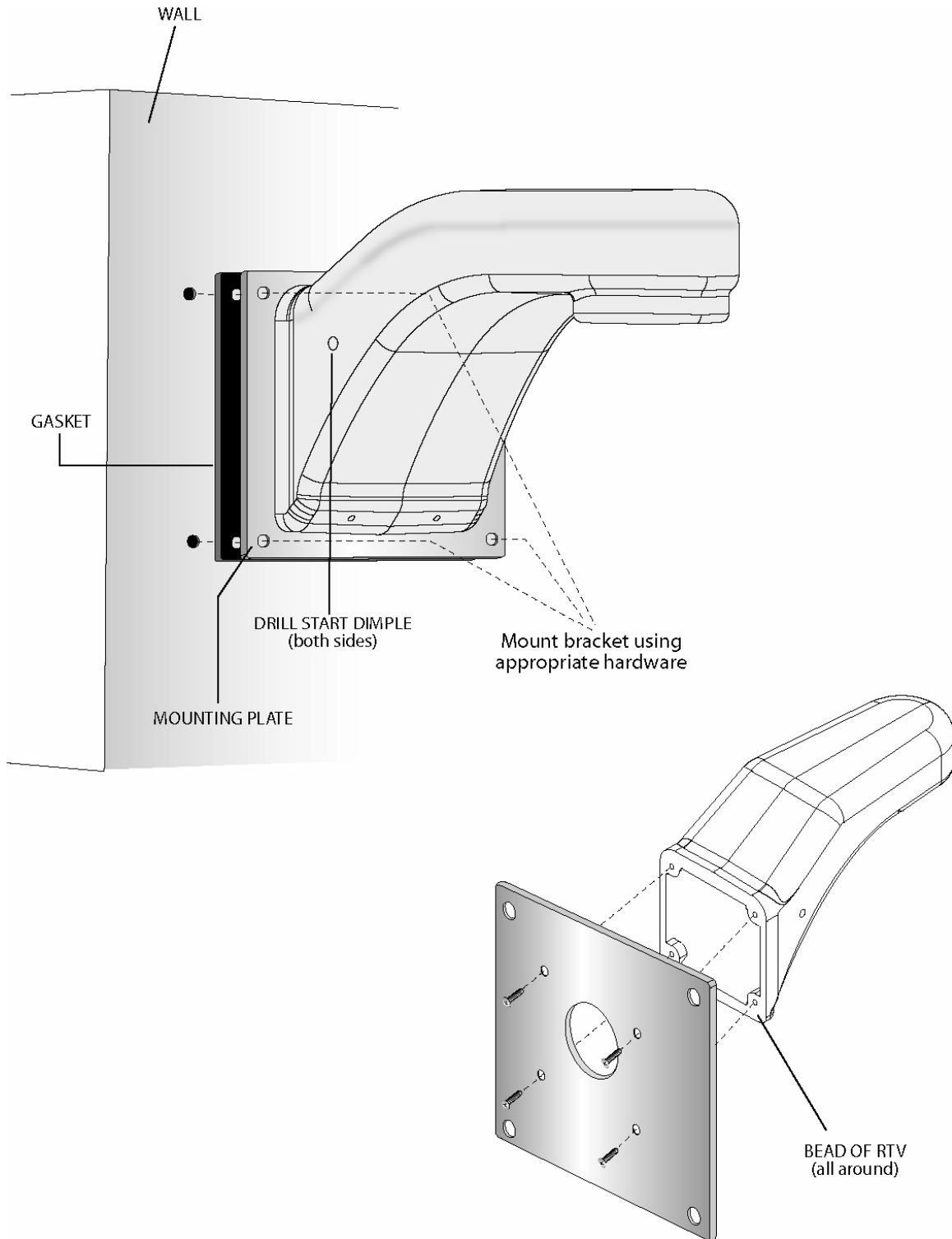


Figure 2
Outdoor Bracket Installation

Note: This configuration can also be used for harsh indoor environments or in any other indoor location.



Technical Information

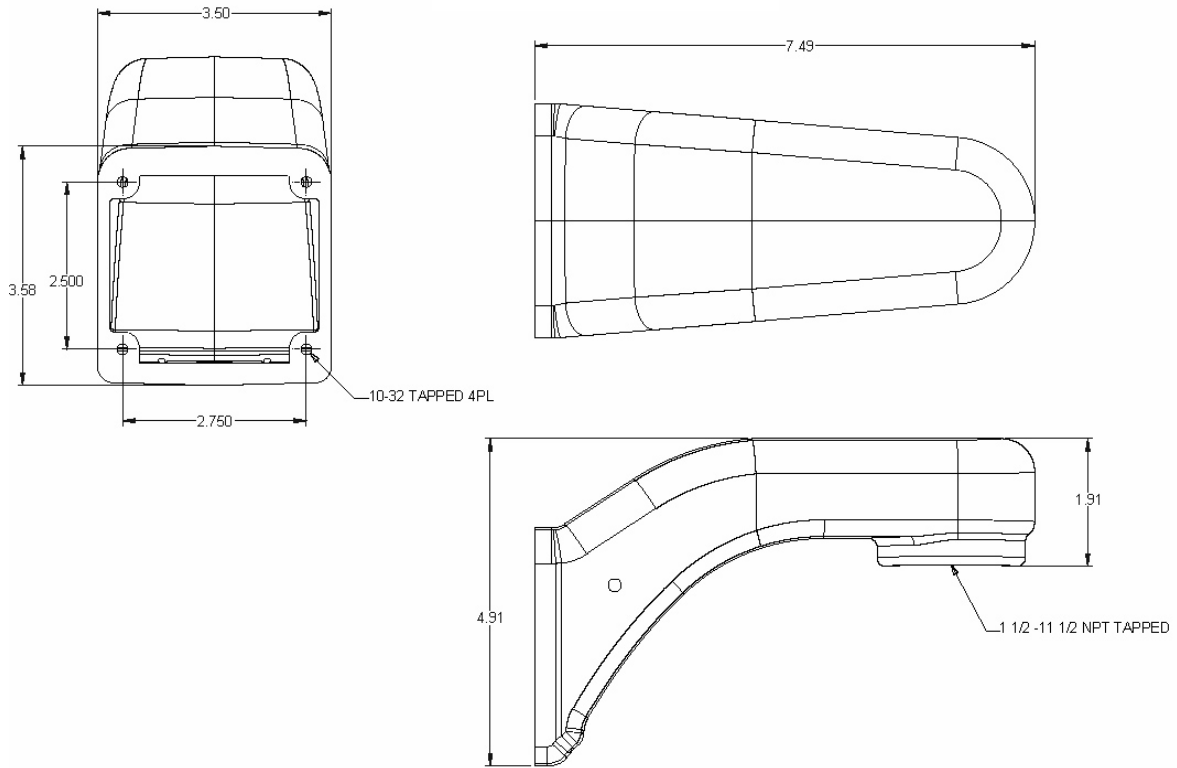
MECHANICAL

Application:	Indoor or outdoor.
Mounting:	Wall or vertical structure.
Mounting Flange Thread:	Standard 1-1/2 inch NPT-F thread.
Dimensions:	See Figure 3. Height: 4.9 in. (124 mm). Width: 3.6 in. (91 mm). Depth: 7.4 in. (188 mm).
Weight:	1.4 lb (0.6 kg).
Construction:	Steel, stainless steel plates.
Finish:	Painted white.

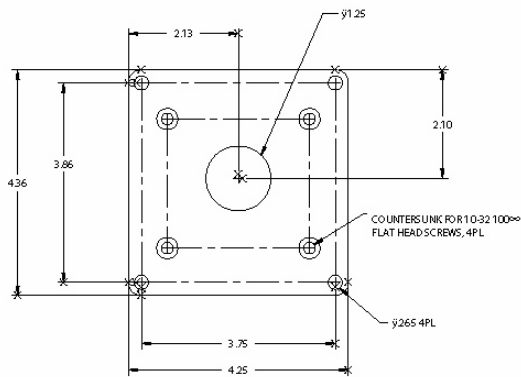
ENVIRONMENTAL (Not evaluated by UL)

Storage Temperature Range:	-40° to 150° F (-40° to 60° C).
Storage Humidity Range:	0 to 90% relative, non-condensing.

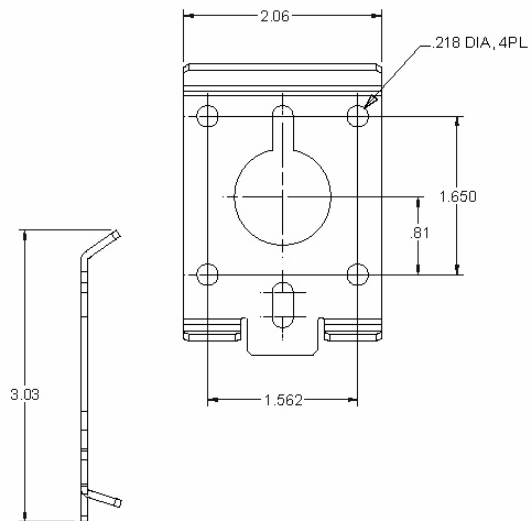
Nextiva S2800e V-WM



OUTDOOR BRACKET



INDOOR BRACKET



**Figure 3
Dimensions**